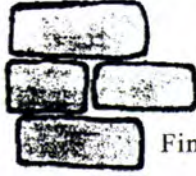


Grace and Peace



Cornerstone

Find the Cornerstone Newsletter at graceandpeacechurch.org Add this site to your links.

Grace and Peace Lutheran Church
7611 N. Knoxville Ave.
Peoria IL 61614-2023
Rev. O.Wayne Shelksohn

July 2010

A Journey of Faith With

Abraham, Jacob, Joseph, and Joshua

As you make journeys this summer you might be excited about the destinations that you are going to. If you run into someone that has made the same journey you might want to ask them some questions about where you are going, what they experienced and advice they might have for you? Our faith life is also a journey. This summer we will have the opportunity to hear from some folks who have made the journey of faith to compare what their journey and ours have in common.

Abraham Tested

Genesis 22:1-19 (July 4th)



After 25 years God finally fulfills his promise to Abraham and Sarah and then demands that Abraham give up his only son and hope for a future.

If you were Abraham how would you react to this demand? What do you think God wants the readers to understand why he waited till the last second to save Isaac? Where are the tests of faith in your life?

Jacob and Esau

Genesis 25:19-34 (July 11th)



Isaac's sons now struggle for control and to win their parents' affections. How does the struggle for control lead to conflicts in families and

communities? What do you do when you feel you have been taken advantage of?



Jacob's Dream

Genesis 28:10-22

(July 18th)

God approaches Jacob with the same blessing that he had for Abraham, yet Jacob tries to bargain with the promise. Is

it a good idea to bargain with God's promises?

Jacob Wrestles With God

Genesis 32:22-32 (July 25th)



After Jacob has lived his life trying to trip people up (Esau, Isaac, Laban) and being tripped up by them, he must wrestle with God. In this wrestling God renames Jacob

from a grabber to one who contends with God. Where in your life are you wrestling with God? What new meaning does God want to give to your life?

First Communion Class

July 11th -25th

We will hold a first communion class for parents that would like to have their children start taking communion. The class will meet after church in July. It is important that parents be with their child in this class. We will work on the following areas:

July 11th

Communion is a Meal Celebrating God

July 18th

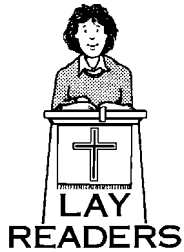
Communion is a Meal to Remember Jesus

July 25th

Communion is a Meal of Forgiveness Shared with Many

SERVING IN WORSHIP

July 2010



Lay Readers

July 4	Carol Gard
July 11	Sarah Braun
July 18	Mary Whitledge
July 25	Barb Bollman



Volunteers Needed

Assisting Minister

July 4—Linda Ericsson
 July 11, 18—Bethany Freitag
 July 25—Roger Ericsson



Greeters

July 4	Brian and Julie Smith
July 11	Carol Luecht & Laura Tomblin
July 18	Pam Kovach & Deb Meyer
July 25	Brian and Julie Smith

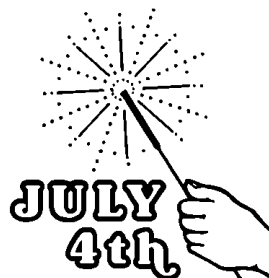
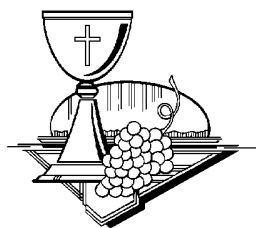
Communion Servers

July 4	Wally and Roxanne Hochsprung
July 11	David and Roberta Dietrich
July 18	Mark and Chris Golden
July 25	Jerry and Mary Jane Hinshaw



Counters

July 4	Carol Gard & Pam Kovach
July 11	Dave and Roberta Dietrich
July 18, 25	Richard and Mary Ellen Noren





Vacation Bible School is Coming Soon! July 25-29, 2010

We need volunteers! If you are not able to be there physically to support our VBS efforts, you can still help us out! We will be in need of donations: food, snacks, supplies, and maybe even a little cash to help make our largest evangelism effort of the year a great one! A list will be posted in the Great Room with a list of items that need to be donated for VBS. If you are able to help out, please contact the person with the request. The list will be posted on or before July 1st.

If you have specific questions please see Natalie Hughes or Kelly Smet.

**Be on the lookout in the Great Room for more info about
God's Great Get-Together!**

ENDOWMENT FUND GRANT APPLICATIONS

The Endowment Committee of Grace and Peace Lutheran church accepts Endowment Fund Grant Applications throughout the year. Requests involving community outreach and special ministries of Grace and Peace Lutheran Church are encouraged. The Committee emphasizes giving to causes which are new and different each year. Anyone wishing to submit an application is asked to first obtain an application form from the Church Office. Upon completing the application, return it to the Church Office any-time during the year. Applications may be submitted at any time throughout the year, however those received by December 31, will be those considered by the Committee for distributions of the following year commencing in March.

Grace and Peace Endowment Committee

Big Thanks from the Youth!

A huge thank you to Ray Boyer who generously donated the Pine Lodge at Detweiller Park for our May Picnic and Teacher Appreciation Event. It was a great day. We had about 35 people in attendance and we were able to get a little relief from the heat since we were under the shelter.

Thank you again Ray, for your generous donation!

Thank you to Nan & Terry Goff and their family for graciously opening their beautiful home to us for our June Swimming Party. Not only did we take over their awesome pool, but they made most of the food for the day, and took care of clean up, as well. We have already had several requests to do another swimming party - maybe in the winter this time!

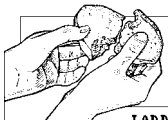
Thank you to the whole Goff family for a great youth event!

Upcoming Youth Events

Jul 11	Children's Church
Jul 23	Irish Dance Team - More Info to Come
Jul 25	<u>NO</u> Children's Church
Jul 25-29	VACATION BIBLE SCHOOL!!
Aug 08	Children's Church
Aug 22	Children's Church

First Communion Class July 11th -25th

We will hold a first communion class for parents that would like to have their children start taking communion. The class will meet after church in July. It is important that parents be with their child in this class. We will work on the following areas:



- **July 11th** Communion is a Meal Celebrating God
- **July 18th** Communion is a Meal to Remember Jesus
- **July 25th** Communion is a Meal of Forgiveness Shared with Many

CALLING ALL THRIVENT MEMBERS !!

Thrivent Choice is under way.

What is Thrivent Choice? It is the new way that Thrivent Financial is giving benevolent dollars to Lutheran nonprofit organizations, such as Grace and Peace Lutheran Church. Hopefully you voted this spring for one or more of the eleven national organizations Thrivent was helping.

How does Thrivent Choice work? Each Thrivent member can participate by voting for the organizations of their choice to receive funding. Members will be notified when they can vote, either via Thrivent magazine or a mailing. Members may vote online by going to the Thrivent website. The Thrivent magazine will likely have a card for people to mail in as well. Members will need to know their member number or a certificate number to verify their eligibility to vote.

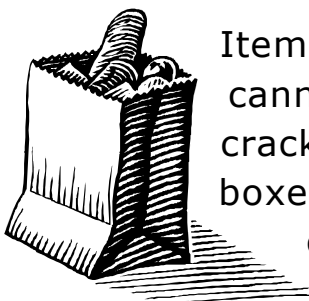
How does this help Grace and Peace congregation? Members can choose Grace and Peace Lutheran in Peoria Illinois to receive funding. We are hoping to have enough funding to do food baskets for LSSI again this October. Your vote will make that possible.

How do I know if I am a member of Thrivent? Thrivent members are those individuals who hold annuity products, insurance policies, investments, and banking accounts with Thrivent. Members age 16 and older are eligible to vote. The amount of funds each member can direct will depend on the types and amounts of Thrivent products they own.

What do I do now? Watch your mail and the Thrivent magazine for information on Thrivent Choice. Check out the Thrivent website for information. And please vote for Grace and Peace when the voting period is open. You may contact Carol Gard at 685-1591 if you have questions. Pam Kovach is our congregational representative serving on our chapter board.

First Sunday Food Collections for Summer

Our food drive for July through September will support **Peoria Friendship House of Christian Service**, located at 800 NE Madison Avenue, Peoria. Friendship House maintains an emergency food pantry for low income persons in need within most of the 61603 area code.



Items needed are canned fruits, applesauce and vegetables, canned meats, peanut butter and jelly, bags of dry beans, crackers, pancake mix and syrup, cake and frosting mixes, boxed dinners, cans of ravioli and Spaghetti's, boxes of cold cereal, hot cereal and cereal bars.





You've probably heard/read the words **Act Boldly!** Those two words come directly from the Women of the ELCA Mission Statement (shown below). This month I want to write about Jan Jarret. You see she has chosen to **act boldly** and will be participating in RAGBRAI –The [Des Moines] Register's Annual Great Bicycle Ride Across Iowa the last week in July! In case you don't know, RAGBRAI is in its 38th year and is the oldest, largest, and longest bicycle touring event in the world. It is not a ride; it is not a race. It starts somewhere along the western Iowa side of the Missouri River and ends somewhere on the banks of the Mississippi River, eastern Iowa. It is a six-day ride across the State of Iowa through all kinds of terrain. The total route averages 472 miles so do the math on how many miles are ridden each day! The route changes each year and communities along the route welcome the riders with open arms! There are host cities each night of the event. These cities provide campgrounds, tents, motel rooms, even extra bedrooms in their homes to the riders—they really appreciate the warm showers! And of course the riders expend lots of energy so all along the route are food vendors and stands to cater to the RAGBRAI participants.

And you ask, how is this all about Lutheran Women Acting Boldly and the Women of the ELCA? Having lived in Iowa for 12 years and watched the riders bike through area communities I have seen the Women of the ELCA in action! Churches have been opened for food, bathrooms, and prayer. *Church ladies* operate food stands along the route for the participants to have a nutritious lunch, quick snack, or a cool drink of water. Sure, some are fundraisers for these groups but think about why they are fundraising and how they turn around those funds to do something good. Jesus would approve. And the hospitality; Lutheran women are hospitable beyond measure and enjoy conversing with the participants, offering prayer, smiles, and encouragement.

And Jan is definitely **acting boldly!** Think about it: for one thing she is going on the ride alone—well not really because we all know who will be with her! She is moving out of her comfort zone (and comfortable bed) to interact and converse with people she has never met before. I am 100% certain she will seek out those *church ladies* for nourishment, smiles, and prayers. And she will show spunk and talk to strangers!

This year the route will take Jan only 14 miles from where we used to live! On Thursday, July 29, she will ride through Parkersburg, Iowa. (Note to Jan: Look for Bethel Lutheran Church, an ELCA congregation.)

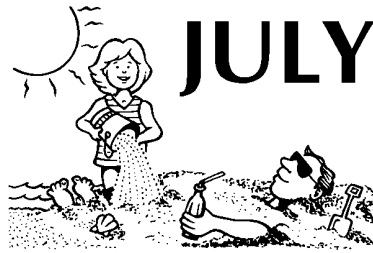
So I hope by now you see the connection! The Women of the ELCA **act boldly** in so many different ways. Jan, your friends at Grace and Peace are proud of you for taking **bold** steps in your life. We will commit to daily prayer for you as you ride! Will you please take pictures and tell us about your journey when you return?

Roxanne Hochsprung for the Women's Board of Grace and Peace:
Ann Joyce, Helen Hamilton,
Chris Golden, Pam Kovach, Ruth Grenzow



To mobilize women to act boldly on their faith in Jesus Christ.

Rebecca Circle
No Meeting
July and August



Woman to Woman
No July Meeting

Miriam Circle
July 13 - 6:30 p.m.
Out to Eat—China Village
206 W Camp St
East Peoria
See Roberta for reservations.

A total of 133 toothbrushes were donated by the congregation for Lutheran World Relief Health Kits. The toothbrush collection was a project of Miriam Circle. By the way, Jan Jarret is the Miriam Circle Coordinator. How about bringing a bar of soap to add to the Health Kit collection in honor of Jan's Ride Across Iowa! 😊

Woman to Woman will not meet in July. Looking forward to August, third annual picnic along Grandview Drive!

aGAPe

aGAPe will be a little mixed-up this summer. We had another good session on June 30 and have 66 plus quilts finished.

The dates for July are Wednesday, July 7 and July 14. As usual bring your lunch and come about 11:30 a.m. to eat, and we will begin work about noon.

Looking ahead to August, the dates will be Wednesday, Aug. 11 and Aug. 25 for sure. We may try to sneak an extra date in there.

We had a note from Irine Roelfs last week. She is the coordinator for the Central Illinois Ingathering of all items in October. She mentioned the quilts that are hand-made are much preferred over store purchased blankets. I guess that answers any questions we might have had regarding the worth of our work!



“Gather at the River”

September 18 & 19, 2010

C/SIS

Women of the ELCA

Fall Retreat

Tips and Ideas

Make your weekend retreat even better by:

- **Bringing a lawn chair** (not necessary but maybe helpful)
- **Wear casual, very casual clothing** (jeans acceptable!)
- **Wear walking shoes**
- **Bring sunscreen**
- **Bring a camera for memory making**
- **Come on Friday evening for a sneak peak of the area**
- **Plan to stay Sunday afternoon for more sight seeing**
- **Questions? Feel free to contact Trish Deppermann 309-362-2108 or Karen Veith 618-433-1833**

COMPLETE AND RETURN THE FOLLOWING TO MAKE YOUR RESERVATION. PLEASE MAIL NO LATER THAN SEPTEMBER 1!

YES, I plan to attend the "Gather at the River" Retreat and Get-Away in Alton over the Sept. 18-19 weekend.

Name _____

Congregation _____

Conference _____

Will be attending:

1. All day Saturday and Sunday morning, including Saturday meals _____
2. Saturday only, including meals _____
3. Saturday programs and lunch only, Not attending Sat. dinner _____

(If you are making a reservation for more participants than yourself, please write their information on a separate piece of paper if you do not have extra copies of this brochure and enclose it with this return form and payment for all.)

Information for making room reservations on back of this brochure. There are other lodging options in Alton, as listed in the Alton Visitor's Guide, or at www.visitalton.com

Registration Cost:

Complete (includes all programming, Saturday lunch and dinner): \$35

Program and Sat. lunch only: \$25

Make checks payable to C/SIS Women of the ELCA.

SEND REGISTRATIONS NO LATER THAN SEPTEMBER 1!

Send to: Cindi Eidson

PO Box 711, Jonesboro, IL 62952

(contact: 618-697-0446

eidson1960@msn.com)

Group rate at Comfort Inn, Alton. \$89 + tax per night, double occupancy

Sept. 17 and/or 18

618-465-9999

Specify "Women of the ELCA"

Group rate cannot be guaranteed after Aug. 17, so reserve early!!

"GATHER AT THE RIVER"

C/SIS LATE SUMMER RETREAT AND GET-AWAY

ALTON, ILLINOIS
Sept 18-19, 2010



**SPEND A WEEKEND
RELAXING, LEARNING
AND REFLECTING!**

Enjoy the beauty of the Mississippi River walking on its banks, driving along the bluffs of River Road.

Learn about the workings of the river---barges, locks and dams, conservation and ecology.

Appreciate the nature and wildlife along the river, including various waterfowl and predators such as the bald eagle.

Reflect on the wonders and complexity, strength and fragility of God's creation of which we are stewards.

Worship on the banks of the river.

ITINERARY

Saturday 9:00-9:30.

registration, coffee and doughnuts, National Great Rivers Museum, Alton

9:30- 10:30 Welcome, opening meeting, program and devotion.

10:30-noon, touring the museum (lock and dam tour, film, exhibits)

Noon-1 p.m. Picnic lunch

1-3 p.m. Touring Riverland Migratory Bird Sanctuary, riverfront area near Alton.

3-5:30. **FREE TIME!** Rest up, walk a bike trail, explore local antique shops, drive along River Road to Grafton.

5:30 Return to museum

6:00 Catered Italian dinner

7:00 Program presented by Treehouse Wildlife Shelter

Outdoor Sunday Worship!
10 a.m.

In the pavilion adjacent to the Great Rivers Museum

Following worship, the planned programming concludes, but participants are invited to spend the afternoon exploring other local sites, or enjoying lunch in a local restaurant in Alton or along the river in Grafton.

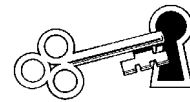
The enclosed Alton Visitors' Guide is full of ideas for making the most of your time in Alton before heading home.

If you're planning to arrive early on Friday, you may want to spend some of your time checking out the many historical sites in and around Alton or walking along the docks of the Alton Marina.

misc. misc. misc.

Coffee Hour Hosts for July

- July 4 Military Moms
- July 11 St Jude Run—Laura Tomblin
- July 18 Ron & Roberta Groth
- July 25 Volunteer Needed

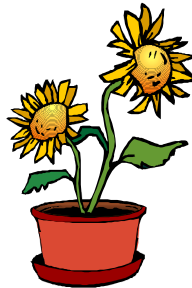


July Key Person
Joyce Smith
682-2137



August Cornerstone Deadline
July 25, 2010

July 4, 11, 18 - Share Sign-up
July 31- Share Pick-up



Altar Flowers—we have many Sundays with no one signed up. Please consider sponsoring the flowers for a Sunday—cost is \$26. Two people may share a Sunday and split the cost.

IN HONOR OF DAX ... RUNNING FROM MEMPHIS TO PEORIA



2010 is the 29th St Jude Memphis to Peoria Run. This unique event has raised over \$20 million for St. Jude's kids. On Tuesday, July 27 the runners travel to Memphis where they begin the 465-mile run back to Peoria, they will arrive on Saturday, July 31, just in time for the annual St. Jude Telethon at the Civic Center. Come down and cheer for them as they run their final mile home!

Runners are required to raise a sizeable amount of money for the privilege to participate in the run. This year is Peoria Fire Chief Kent Tomblin's ninth run and he will again be running in honor of Dax Locke. Please help Kent raise the money needed to cover his sponsorship. Donations can be made at the July 11 Coffee Hour or in the "St. Jude Huggy Bear" canister in the church office.

Many thanks for your years of generous support so that someday we finally WIN the fight against all childhood cancers.

SUNDAY, JULY 11
St. Jude Memphis to Peoria
Coffee Hour Fundraiser



Grace and Peace Lutheran Church Congregation Council

June 15, 2010

Present: Louise Cheatham, Jim Claude, David Dietrich, Roberta Dietrich, Linda Ericsson, Nan Goff, Terry Goff, Wally Hochsprung, Jan Jarrett, Pastor Shelksohn

Christ Caring Concerns: Members of the council contacted at least 2 of the members of their “Ton of Food” teams to ask for prayers for the council as they met and to see if congregation members had any prayer concerns that the council should pray for.

Devotion was shared by Linda Ericsson.

Sharing the Vision:

Congregation Sharing: Kelly Smet addressed the council to discuss Vacation Bible School. She handed out the current volunteer assignments, themes and schedules. If you would like to help with VBS but have not been contacted see Kelly or Natalie Hughes. The dates are July 25 – 29.

To help spread the word about VBS, yard signs will be purchased for \$10 each to advertise when and where Grace and Peace’s Bible School will be held, and placed in areas with high traffic or with a large number of children in the area. Donations for the signs can be given to Kelly or through your Sunday offering.

Community Involvement: Discussed whether there are any opportunities to volunteer in some of the Illinois towns hit by tornadoes. Pastor to make calls this week to see whether and where additional help is needed.

Spirituality: One of the goals for this year is to have members attend Sunday service at least 60% of Sundays. Some of the ideas presented from ministries and the council to help achieve that goal were:

- Have a “Positive Suggestion Box” to solicit congregation ideas; box would be checked weekly and suggestions distributed to appropriate ministry or staff member.
- Continue to encourage the signing of the friendship pads.
- Council members to make follow up calls to determine the concerns of the congregation and to encourage attendance at church.

New Business:

Cameron Poshard will not be able to fill out the remainder of his term on council. It was suggested that the nominating committee recommend a nominee to succeed Cameron. The council would then need to vote on the candidate(s).

Property issues: A new lawn mower was purchased to replace 2 old mowers. The old mowers will be offered to the congregation to see if anyone would like to purchase them for parts or scrap. If no one is interested in purchasing, there is a member of the congregation that would dispose of them.

Repairs are being made on the air conditioner.

There are still leaks in the hallway and women’s rest room. Property ministry needs to determine the source of the leaks and report at the next council meeting.

Reports:

Pastor’s report accepted as presented. Pastor will be in Africa September 17 to October 13.

Stewardship Ministry

Treasurer’s report

Women of Grace and Peace Executive Board
Worship and Music Ministry
Congregation Council Minutes from May 18, 2010

The council closed with the Lord's Prayer.

Next council meeting: July 20th, 6:30 pm.

Executive council: Wednesday, July 15, 5 pm.

Devotions and snacks for next month's meeting: Terry Goff and Wally Hochsprung

Respectfully submitted,
Jan Jarrett

July 2010

Sunday	Monday	Tuesday	Wednesday	Thursday	Friday	Saturday																																																																																																		
				1 6:00 PM Christian Ed and Youth Meeting	2	3																																																																																																		
<table border="1"> <thead> <tr> <th colspan="7">Jun 2010</th> </tr> <tr> <th>S</th> <th>M</th> <th>T</th> <th>W</th> <th>T</th> <th>F</th> <th>S</th> </tr> </thead> <tbody> <tr> <td></td> <td></td> <td>1</td> <td>2</td> <td>3</td> <td>4</td> <td>5</td> </tr> <tr> <td>6</td> <td>7</td> <td>8</td> <td>9</td> <td>10</td> <td>11</td> <td>12</td> </tr> <tr> <td>13</td> <td>14</td> <td>15</td> <td>16</td> <td>17</td> <td>18</td> <td>19</td> </tr> <tr> <td>20</td> <td>21</td> <td>22</td> <td>23</td> <td>24</td> <td>25</td> <td>26</td> </tr> <tr> <td>27</td> <td>28</td> <td>29</td> <td>30</td> <td></td> <td></td> <td></td> </tr> </tbody> </table>		Jun 2010							S	M	T	W	T	F	S			1	2	3	4	5	6	7	8	9	10	11	12	13	14	15	16	17	18	19	20	21	22	23	24	25	26	27	28	29	30				<table border="1"> <thead> <tr> <th colspan="7">Aug 2010</th> </tr> <tr> <th>S</th> <th>M</th> <th>T</th> <th>W</th> <th>T</th> <th>F</th> <th>S</th> </tr> </thead> <tbody> <tr> <td>1</td> <td>2</td> <td>3</td> <td>4</td> <td>5</td> <td>6</td> <td>7</td> </tr> <tr> <td>8</td> <td>9</td> <td>10</td> <td>11</td> <td>12</td> <td>13</td> <td>14</td> </tr> <tr> <td>15</td> <td>16</td> <td>17</td> <td>18</td> <td>19</td> <td>20</td> <td>21</td> </tr> <tr> <td>22</td> <td>23</td> <td>24</td> <td>25</td> <td>26</td> <td>27</td> <td>28</td> </tr> <tr> <td>29</td> <td>30</td> <td>31</td> <td></td> <td></td> <td></td> <td></td> </tr> </tbody> </table>		Aug 2010							S	M	T	W	T	F	S	1	2	3	4	5	6	7	8	9	10	11	12	13	14	15	16	17	18	19	20	21	22	23	24	25	26	27	28	29	30	31							
Jun 2010																																																																																																								
S	M	T	W	T	F	S																																																																																																		
		1	2	3	4	5																																																																																																		
6	7	8	9	10	11	12																																																																																																		
13	14	15	16	17	18	19																																																																																																		
20	21	22	23	24	25	26																																																																																																		
27	28	29	30																																																																																																					
Aug 2010																																																																																																								
S	M	T	W	T	F	S																																																																																																		
1	2	3	4	5	6	7																																																																																																		
8	9	10	11	12	13	14																																																																																																		
15	16	17	18	19	20	21																																																																																																		
22	23	24	25	26	27	28																																																																																																		
29	30	31																																																																																																						
4 Independence Day 9:00 AM Worship Service	5 Office Closed	6 6:30 AM Women's Bible Study 6:30 PM Finance Meeting - Vicki Bittner's Home 6:30 PM Worship & Music	7 7:00 AM Brkfst Bible Stdy 9:30 AM Bible Study 11:30 AM aGAPe	8	9	10																																																																																																		
11 9:00 AM Worship Service 9:15 AM Children's Church 10:30 AM 1st Communion Class 10:30 AM Nature Mtg	12 6:30 PM Endowment Meeting	13 5:30 PM Miriam Circle - China Village - 206 W Camp St East Peoria	14 7:00 AM Brkfst Bible Stdy 9:30 AM Bible Study 11:30 AM aGAPe 5:30 PM Executive Mtg	15	16	17																																																																																																		
18 9:00 AM Worship Service 10:30 AM 1st Communion Class	19	20 6:30 AM Women's Bible Study 6:30 PM Council Meeting	21 7:00 AM Brkfst Bible Stdy 9:30 AM Bible Study	22	23 Irish Dance Team - More information coming	24																																																																																																		
25 No Children's Church 9:00 AM Worship Service 10:30 AM 1st Communion Class	26 5:30 PM Women's Executive Board Meeting	27	28 7:00 AM Brkfst Bible Stdy 9:30 AM Bible Study	29	30	31 9:30 AM Share Distribution																																																																																																		
<table border="1"> <tr> <td colspan="7">Vacation Bible School 6:00 pm - 8:30 pm</td> </tr> </table>							Vacation Bible School 6:00 pm - 8:30 pm																																																																																																	
Vacation Bible School 6:00 pm - 8:30 pm																																																																																																								



NON-PROFIT ORG.
U. S. POSTAGE
PAID
PEORIA IL
PERMIT NO. 548

July 2010
7611 N Knoxville Ave Peoria, IL 61614

CHANGE SERVICE REQUESTED

JULY 2
Edith Albright

JULY 3
Chris Mitchell

JULY 4
Chris Golden

JULY 7
Carol Martino

JULY 9
Keri Dodson

JULY 16
Sue Hughes
Shawn Priess

JULY 21
Mary Whitledge

JULY 22
Lorene Maher

JULY 24
Vickie Bittner

JULY 27
Winston Lorentz

August 3
Joyce Smith
Sandie Crowe

